

# Summit Program



Implement the next  
generation of technologies  
in today's facilities

## SUSTAINABLE DEVELOPMENT, GREEN RETROFIT AND CONSTRUCTION SUMMIT

Discover how to obtain  
immediate benefits from  
current environmental  
initiatives

---

Discuss environmental and  
energy reducing strategies  
in new construction  
projects with your peers

Energy Efficient & Environmentally Sustainable  
Building Technologies

Profiting from the reduction of Energy  
Consumption and Emissions

October 29 – 31, 2008, Hyatt Regency, Baltimore



# Welcome

*[ Sustainable Development, Green Retrofit and Construction Summit: October 29 – 31, 2008, Hyatt Regency, Baltimore ]*



## **Welcome to the Sustainable Development, Green Retrofit and Construction Summit**

On behalf of FMA, we are pleased to have your participation. Throughout the Summit, attendees will have the opportunity to learn from their peers about technological developments and winning strategies.

We are here to work with you to make this a productive and enjoyable time. Please speak with us should you have any special requests or questions.

Enjoy the Summit.

**Dana Milos**

*Program Manager*



John Hislop  
*Director, Business Development*  
*Summit Chair*



S. Sami Malick  
*Managing Director*  
*Summit Chair*



Dana Milos  
*Program Manager*



Joseph Piazza  
*Vice President*  
*Business Development*



Mark Pawlowsky  
*Director, Business Development*



Saad Malick  
*Manager of Operations*





# Table of Contents

[ Sustainable Development, Green Retrofit and Construction Summit: October 29 – 31, 2008, Hyatt Regency, Baltimore ]

Welcome . . . . .	2
FMA Team members (attending this Summit). . . . .	3
Advanced Green Technologies, Inc. <i>Case Study</i> . . . . .	6 – 7
ANTARES Group Inc. <i>Case Study and Interactive Workshop</i> . . . . .	8 – 9
Capstone Turbine Corporation® <i>Case Study and Interactive Workshop</i> . . . . .	10 – 11
Clayco <i>Case Study</i> . . . . .	12 – 13
Constellation NewEnergy Power <i>Keynote</i> . . . . .	14
Constellation Energy's Projects & Services Group <i>Featured Presentation</i> . . . . .	15
William J. Clinton Foundation, Clinton Climate Initiative (CCI) <i>Keynote</i> . . . . .	16 – 17
EATON Corporation – Electrical Group <i>Case Study and Interactive Workshop</i> . . . . .	18 – 19
Environmental Resources Management (ERM) <i>Keynote</i> . . . . .	20
United States Department of Energy - Building Technologies program <i>Keynote</i> . . . . .	21
Haworth Inc. <i>Case Study</i> . . . . .	22
JDSU <i>Keynote</i> . . . . .	23
Office of the Secretary of the Navy <i>Keynote</i> . . . . .	24 – 25
North America Power Partners <i>Featured Presentation</i> . . . . .	26 – 27
PureChoice, Inc. <i>Featured Presentation</i> . . . . .	28 – 29
Richards-Zeta Building Intelligence, Inc. <i>Featured Presentation</i> . . . . .	30
SOFAME Technologies Inc. <i>Case Study</i> . . . . .	31
Shaw Environmental and Infrastructure Inc. <i>Case Study and Interactive Workshop</i> . . . . .	32 – 33
HESS Corporation <i>Featured Presentation</i> . . . . .	34
Benjamin Moore & Co <i>Keynote</i> . . . . .	35
Maryland Energy Administration <i>Keynote</i> . . . . .	36
U.S. Green Building Council (USGBC) <i>Keynote</i> . . . . .	37
U.S. General Services Administration <i>Keynote</i> . . . . .	38
Husky <i>Keynote</i> . . . . .	39
Environmental Resources Management (ERM), MeadWestvaco, Metro Atlanta Chamber of Commerce and AGL Resources <i>Panel</i> . . . . .	40 – 41
Clayco <i>Panel</i> . . . . .	42 – 43
ENERGY STAR, EcoSynergy, Inc., Domani and Consumer Electronics Association (CEA) <i>Panel</i> . . . . .	44 – 45
Holcim Ltd., ENERGY STAR and Raytheon <i>Panel</i> . . . . .	46 – 47
Laser Light, PureChoice and U.S. General Services Administration <i>Panel</i> . . . . .	48 – 49
INDEX . . . . .	50
Bradley Corporation and WindCurrent <i>Exhibit Partners</i> . . . . .	51
Upcoming Summits . . . . .	Back Cover



# Case Study

[ Sustainable Development, Green Retrofit and Construction Summit: October 29 – 31, 2008, Hyatt Regency, Baltimore ]



## DISCOVER **FlexLight**

THE SOLAR SOLUTION



Call **NOW** and discover how to integrate solar  
into your business plan.

ADVANCED GREEN



TECHNOLOGIES

**954-735-2641**

**www.AGT.com**

2100 NW 21st Ave. - Fort Lauderdale - Florida - 33311

**AGT's Solar Laminate provides high IRR, quick ROI, and  
qualifies for Federal and State tax credits.**

# Case Study

... Continued from Left Page

## Case Study on Economically Viable Solar Facility Integration

### Advanced Green Technologies, Inc.

**Yann Brandt**

*Vice President*

This presentation will include a case study on the challenges facility managers face when identifying cost effective renewable power systems. It will cover the practical, real world financial options available and how a leading US company made the right financial and technology choice.

Advanced Green Technologies (AGT) is an innovative solar technology company. AGT provides a complete spectrum of sustainable building integrated solutions and renewable energy products for commercial and residential applications. AGT procures, designs, distributes, and supports installation of the most advanced, cost effective and efficient green solutions to its clients worldwide.

As cofounder of AGT, Yann Brandt identifies and develops the technologies and partnerships that help the company succeed. Earlier in his career Yann Brandt worked as project engineer at Advanced Roofing. His responsibilities included roofing-related engineering and quality assurance. He developed an in-house engineering department specializing in hurricane resistant roofing system design. Yann Brandt holds a B.S. Degree in Mechanical Engineering from Johns Hopkins University.



# Lead Partner

[ Sustainable Development, Green Retrofit and Construction Summit: October 29 – 31, 2008, Hyatt Regency, Baltimore ]



## Renewable Energy and Energy Efficiency

### Focused on the Future of Energy

ANTARES is an engineering & project development firm specializing in renewable energy and energy efficiency projects. Founded in 1992, the firm is entirely focused on energy technologies and processes that have the potential to change the way energy is produced and consumed. This work ranges from evaluating specific project or market opportunities to assisting in the development of government policies that result in clean, practical energy and energy efficiency solutions. Our clients include small commercial and industrial complexes to Fortune 500 companies with global reach. Ask us how we can help you implement energy options that prepare your business for the changing nature of global energy production and use.



Energy solutions  
that will pass the  
test of time

- Resource Assessments
- Feasibility Analysis
- Project Management
- Owner's Engineer
- Market Analysis
- Strategic Planning
- Policy Analysis
- Technology Evaluations

[antareshgroupinc.com](http://antareshgroupinc.com)

#### **Headquarters**

4351 Garden City Drive  
Landover, Maryland 20785

#### **Other Offices**

Harrisonburg, Virginia  
Rome, New York  
Denver, Colorado

Phone: 301-731-1900 x 16  
Fax: 301-731-1904  
[clindsey@antareshgroupinc.com](mailto:clindsey@antareshgroupinc.com)



# Case Study and Interactive Workshop

... Continued from Left Page

## Analytical Methodology for Evaluating and Implementing Renewable Energy Options: Commercial and Industrial Energy Users

### ANTARES Group Inc.

ANTARES will present an analysis framework and case studies for assessing and implementing renewable energy and energy efficiency technologies across multiple sites or large facility campuses.

ANTARES is an engineering and development firm specializing in Renewable Energy and Energy Efficiency projects. Founded in 1992, the company's clients include Fortune 500 companies, government agencies, universities, national laboratories and technology developers. ANTARES corporate expertise includes resource assessments; technology characterizations; market studies; project feasibility analysis; owner's engineering; and policy/incentives analysis.



### Renewable Energy Interactive Buffet – Workshop

Workshop participants will prioritize a menu of renewable energy technologies for discussion. ANTARES will offer a brief, interactive consultation on these topics as time permits.

#### Edward E. Gray

*P.E., Principal*

Mr. Gray has more than 30 years experience in energy consulting. As the President and founder of the ANTARES Group, he has been involved in every aspect of project and business development for advanced energy systems: market and economic assessment, business development, systems design and analysis and project monitoring and evaluation.



#### Christopher A. Lindsey

*Associate Principal*

Mr. Lindsey is an Associate Principal with the ANTARES Group with more than 15 years in renewable energy project evaluation and development. He has performed numerous technical and economic analyses for renewable energy and biobased product development projects across a diverse range of renewable energy and energy efficiency technologies.



#### Kevin S. Comer

*Associate Principal*

Mr. Comer is a mechanical engineer and project manager with more than 15 years specializing in energy efficiency and alternative energy technologies. He has extensive experience in energy auditing and evaluation, techno-economic feasibility and design studies for solar energy systems, and power plant permitting, performance testing, and project evaluation.

**Lead Partner**

# Lead Partner

[ Sustainable Development, Green Retrofit and Construction Summit: October 29 – 31, 2008, Hyatt Regency, Baltimore ]



LEED



CHP/CCHP

## Your Green and Clean Building Energy Solution



Secure Power/UPSource

- **Generate LEED Points** – Provides efficiency improvements
- **Ultra-low Emissions** – Compliant with California Air Resources Board (CARB) standards
- **On-site Energy** – Solutions to provide hot and chilled water
- **Scalable** – 30 kW to 10 MW of green power
- **Durable** – Tens of millions of operating hours and counting
- **Low Maintenance** – Only one moving part; no lubricants

**1.866.422.7786 • [www.capstoneturbine.com](http://www.capstoneturbine.com)**

*Reliable power when and where you need it.  
Clean and simple.*

# Case Study and Interactive Workshop

... Continued from Left Page

## Do Well By Doing Good: Save Money and Help the Environment by Creating Your Own Energy at Your Facility with Capstone Turbines

### Capstone Turbine Corporation®

Learn how installing a Capstone combined heat and power system can significantly reduce your energy costs while providing local air quality benefits along with reduced greenhouse gas emissions.

Capstone Turbine Corporation® is the world's leading producer of low-emission air bearing turbine systems, and was first to market with commercially viable air bearing turbine technology. Capstone is headquartered in Chatsworth, California and has offices in New York, Mexico City, Milan, Bath, Shanghai and Tokyo.

### Justin Rathke

*Director, Policy and Business Development*

Mr. Rathke is based in Washington, DC and handles all matters of government policy affecting the company. He is responsible for creating new business opportunities related to positioning Capstone technology as reliable clean power. He formerly worked for the U.S. Government in several positions related to energy policy and trade.



---

## Capstone Upgrades 2002 MicroTurbine Array & Increases Thermal Efficiency by 47% – Workshop

Jeff Beiter, Managing Partner of E-Finity will showcase a 2007 EPA Combined Heat and Power Partnership Spotlight Project, which has been operating (5) C65 MicroTurbines since 2002. E-Finity Distributed Generation utilizes Capstone MicroTurbine solutions to help customers lower energy costs and improve reliability with low-emission, on-site energy

### Jeff Beiter

*Managing Partner at E-Finity Distributed Generation, LLC*

Jeff founded E-Finity Corporation in 1991 in order to implement demand side management and energy conservation measures throughout the Mid-Atlantic Region. E-Finity Distributed Generation is representing On-Site Combined Heat and Power with Capstone Turbine Corporation. This technology promotes low-emission, highly efficient onsite combined heat and power with an air-lubricated and air cooled "jet Engine". Jeff is championing the EPA's Combined Heat and Power Program. EPA Combined Heat and Power has recently recognized one of Jeff's most recent MicroTurbine projects as a National Partner Spotlight.





# Lead Partner

[ Sustainable Development, Green Retrofit and Construction Summit: October 29 – 31, 2008, Hyatt Regency, Baltimore ]



THE GREATEST  
BUILDINGS HAVE  
THE LEAST IMPACT.



## SUSTAINABLE CONSTRUCTION - PROTECTING THE ENVIRONMENT WITH EVERY PROJECT.

As a full-service real estate development, design and construction firm, we are in a unique position to control all phases of a sustainable project, including design, estimating, buyout, documentation, construction and successful completion in an “integrated services approach.” Our integrated methods, established procedures and dedication to our client’s mission separate us from the rest.

### CLAYCO

THE ART & SCIENCE OF BUILDING

[www.claycorp.com](http://www.claycorp.com)



# Case Study

... Continued from Left Page

## Sustainable Design and Construction

### Clayco

#### Paul Todd Merrill

*Director of Sustainable Construction*

AGC National and Regional Member

USGBC National Member

USGBC St. Louis Chapter Vice Chairman

DBIA National and Regional Member

Presentation will include an overview of the green building certification process; progress to date and motivators; risks and cost of going green; greening an existing buildings; myths/misconceptions; lessons learned; project examples.

Clayco is one of the nation's largest, privately owned real estate, architecture and engineering, design/build and construction firms. Energy efficient-related strategies are a hallmark of Clayco and we are a leader in "green architecture and LEED-certified buildings." Clayco offers full-service site searches, incentive analysis, and finance leaseback capability.

Paul, a LEED (Leadership in Energy and Environmental Design) Accredited Professional, has specialized in green building practices with Clayco. He received his B.S. in Electrical Engineering and is a registered professional engineer in 15 states. Paul directs LEED AP study sessions and training to clients, subcontractors and employees of Clayco.



## CLAYCO

THE ART & SCIENCE OF BUILDING



# Lead Partner

[ Sustainable Development, Green Retrofit and Construction Summit: October 29 – 31, 2008, Hyatt Regency, Baltimore ]



When the right forces combine,  
you get solutions as brilliant as the sun,  
and as powerful as the wind.



Responsible, sustainable energy will power America's future. Forward-thinking organizations understand this, and many of them are partnering with Constellation Energy to reduce their energy emissions.

Constellation understands the importance of developing green energy resources. We currently own or co-own nearly 700 MW of renewable energy capacity, with more than 400 MW more under contract.

But renewable energy development is just part of Constellation's global energy portfolio. We are also an international leader in nuclear development, a top natural gas supplier, and the largest wholesale electricity supplier in North America, serving more than two-thirds of the Fortune 100. All of which make Constellation the natural choice for your energy solutions.

## Join Our Constellation Energy Speakers:

### Andrew Singer

Senior Vice President  
Constellation NewEnergy Power

Wednesday, October 29, 2008  
1:40 p.m. – 2:20 p.m.  
Room A

### Kenneth B. Chodnicki

Senior Vice President  
Business Development  
Constellation Energy's  
Projects & Services Group

Thursday, October 30, 2008  
11:30 a.m. – 12:00 p.m.  
Room B



**Constellation Energy®**

The way energy **works.™**

[constellation.com](http://constellation.com)

... Continued from Left Page

## Impacts and Opportunities in the New Energy World

### Constellation NewEnergy Power

**Andrew M. Singer**

*Senior Vice President*

Going beyond straight forward energy efficiency efforts, Andrew will discuss advanced purchasing options, financial risk management strategies, demand response, load shaping, intelligent energy systems and enterprise wide energy management. He will also examine how sophisticated purchasing strategies which incorporate Renewable Energy Certificates, Carbon Offsets, and onsite generation can play a crucial role in meeting manufacturer's environmental goals.

Constellation Energy's NewEnergy Power is North America's leading competitive energy supplier and serves business customers from Main Street to two-thirds of the Fortune 100. Our more than 14,000 commercial, industrial and public-sector customers, representing nearly 17,000 megawatts of peak electric load, depend on our expertise to help them make smart energy buying decisions for their business. We are a subsidiary of Constellation Energy, a Fortune 200 integrated energy company with more than \$21 billion in assets.

As Senior Vice President of Constellation Energy, NewEnergy Power, Andrew Singer is a leading expert in today's most discussed energy related issues. With over 10 years of experience working with some of the world's largest and most sophisticated energy consumers, Mr. Singer is a nationally recognized speaker on timely topics such as the future of alternative energy solutions, why Green and Sustainable business practices matter and how businesses can implement dynamic, budget-centric energy management programs.



# Featured Presentation

[ Sustainable Development, Green Retrofit and Construction Summit: October 29 – 31, 2008, Hyatt Regency, Baltimore ]



## Making Sustainability Planning a Financial Reality

### Constellation Energy's Projects & Services Group

**Kenneth B. Chodnicki**

*Sr. Vice President, Business Development*

Member of the Board of Directors, American Red Cross

Member of the Board of Directors, Boy Scouts of America

Member of the University President's Council, Mount Saint Mary's

The cost to develop and operate renewable energy systems isn't always prohibitive – in fact, it's possible to implement innovative sustainable systems at costs lower than those of traditional electric utilities.

Constellation Energy's Projects & Services Group provides customized energy and environmental solutions – energy consulting, energy services, and energy assets – that reduce carbon footprint, modernize customer facilities and minimize total energy spend to commercial, retail and government customers across North America. With our dedicated staff and unparalleled Fortune 125 corporate resources, we help our customers save energy, reduce costs, modernize their operations, decrease greenhouse gas emissions and promote a sustainable future.



The cost to develop and operate renewable energy systems isn't always prohibitive – in fact, it's possible to implement innovative sustainable systems at costs lower than those of traditional electric utilities.

Kenneth B. Chodnicki, Sr. Vice President of Business Development with Constellation Energy Projects & Services Group, is responsible for growing the energy efficiency and sustainable energy business. Mr. Chodnicki brings over 25 years of domestic and international sales experience to this effort. He is a graduate of Mount Saint Mary's University in Maryland and serves on several community boards.

## The Climate/ Energy Crisis: A Call for Leadership

**William J. Clinton Foundation, Clinton Climate Initiative (CCI)**

**Jan Hartke**

*Consultant*

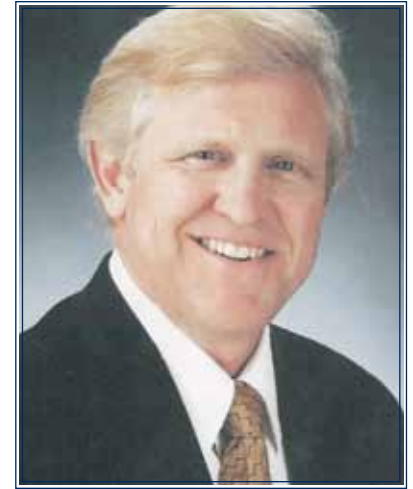
The “business as usual” scenario is a recipe for disaster. If the current trend lines are allowed to continue, America will deepen our dependency on oil, hasten our slide towards climate destabilization, and squander our historic opportunity to lead a green revolution. We need a new investment strategy that creates millions of green jobs right here at home, a new energy policy that puts efficiency and clean power at the front of the line, and a new brand of bold leadership on the climate/ energy crisis that will define our age and determine our destiny.

Jan Hartke joined the Clinton Climate Initiative in August 2006. He has worked on global environmental issues, including climate change, for twenty-five years. He has served as President of the Global Tomorrow Coalition, Executive-Director of EarthVoice, and on the Board of Directors of a wide variety of organizations, including the Enterprise for the Americas as an appointee of President Clinton. Prior to working in the NGO movement, Hartke served as the elected State Treasurer of New Mexico, Chief Public Defender for the State, and Director of the Governor’s Washington D.C. Office. He received his law degree from the University of Virginia and his degree in international relations from Brown University.

At the end of his second term as the 42nd President of the United States, President Clinton established the William J. Clinton Foundation. Since then the Foundation has grown into a global non-governmental organization with more than 800 staff and volunteers around the world, with offices in New York City, Little Rock, Arkansas, and Boston, Massachusetts. Today the Foundation works through seven main programs, one of them is the Clinton Climate Initiative (CCI).

President Clinton launched the Clinton Climate Initiative (CCI) in August 2006 to make a difference in the fight against climate change in practical, measurable and significant ways. In its first phase, CCI is serving as the exclusive implementing partner of the C40 Large Cities Climate Leadership Group, an association of large cities around the world that have pledged to accelerate their efforts to reduce greenhouse gas emissions. CCI is assisting partner cities to develop and implement large scale projects resulting in substantial reductions in energy use and greenhouse gas emissions.

Expanding upon its work with the C40, CCI is extending the benefits of its programs and purchasing assistance to additional cities, building owners, and institutions.



# Lead Partner

[ Sustainable Development, Green Retrofit and Construction Summit: October 29 – 31, 2008, Hyatt Regency, Baltimore ]



## A bigger impact on the marketplace, A smaller footprint on the world



Eaton believes that companies everywhere must answer the same question over the next decade: How can we sustain our growth, both profitably and responsibly? And we believe tomorrow's leaders will be the companies that master sustainable growth.

Eaton's commitment to sustainability is longstanding. We are a member of the U.S. Green Building Council, the Green Grid and the Green Suppliers Network, and we participate in the international Carbon Disclosure Project (CDP).

Learn more about our green solutions:  
[www.eaton.com/greenbuildings](http://www.eaton.com/greenbuildings)

Eaton can help you operate a building in ways that are both smart and sustainable.

Contact us for more information:

**John White**  
[johnjwhite@eaton.com](mailto:johnjwhite@eaton.com)  
(412) 893-4651

PowerChain Management is a registered trademark of Eaton Corporation.





# Case Study and Interactive Workshop

... Continued from Left Page

## The Vision Project: A Collaborative Approach Toward Carbon Neutral Facilities

### EATON Corporation – Electrical Group

Sustainability is emerging as a key management and operating initiative. Facilities are the biggest opportunity to meet sustainability initiatives and EATON is embarking on a collaborative effort called the Vision Project to meet it's own commitments to sustainability.

EATON Corporation's PowerChain Management solutions help our customers achieve their business goals while maintaining environmentally sustainable enterprises. EATON's energy audits and real-time energy monitoring enable customers to manage energy resources wisely. Products such as EATON's state-of-the-art UPSs, variable speed drives and lighting controls help conserve energy and increase efficiency while contributing in up to 40% of all LEED credits. EATON is committed to sustainable solutions—for our customers and for ourselves.

#### John J. White, PE, CEM, LEED AP

*Director, Energy Management and Sustainability Solutions*

Member of USGBC, LEED Accredited Professional, Green Grid, Data Collection & Analysis Workgroup, Certified Energy Manager, Professional Engineer

John J. White, PE has a major role in the delivery of EATON's PowerChain Management solutions to help its customers develop sustainability programs, alternative energy approaches and empower building owners to qualify their facilities for LEED® certification.



*Powering Business Worldwide*

---

## Vision Project: Status & Successes on Achieving Business Sustainability – Workshop

Using the collaborative approach initiated through EATON's Vision Project, real-world examples will be shared including recommendations on how to implement and achieve similar successes - using sustainability to make your business more sustainable.

#### David Davidson

*Director, Sustainability Center*

USGBC Member, Association of Energy Engineers Member, ZigBee Alliance Member

Dave Davidson has more than 30 years of experience in engineering, sales, marketing, business development and manages the engineering of EATON's PowerChain Management solutions. Dave manages the development and implementation of sustainability and alternative energy programs through the development of custom designed integrated solutions that include Electrical Distribution, HVAC Control, Lighting Control, Power Quality and Monitoring.



**Lead Partner**

# Lead Partner

[ Sustainable Development, Green Retrofit and Construction Summit: October 29 – 31, 2008, Hyatt Regency, Baltimore ]



## ERM's Sustainability Dividend

ERM is the world's leading provider of environmental, health and safety, risk and social consulting services. We deliver innovative solutions for business and government clients, assisting them in managing their environmental and related risks. We have 145 offices in 41 countries and employ over 3,500 staff.

### For more information contact:

Michael McKibben  
One Capital City Plaza  
3350 Peachtree Road, Suite 1120  
Atlanta, GA, US 30326  
T: +1 404 816 6606  
E: michael.mckibben@erm.com  
[www.erm.com](http://www.erm.com)



... Continued from Left Page

## The Sustainability Dividend—converting sustainability from a balance sheet liability to corporate asset and competitive advantage

### Environmental Resources Management (ERM)

**Geoffrey Booth**

*Senior Fellow, Sustainable Development*

**Michael McKibben**

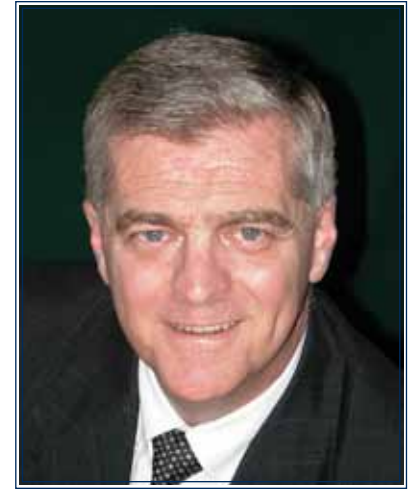
*President of ERM Southeast*

Every dog on every street corner is barking about Sustainable Development—but for all the noise, what actually constitutes sustainable development and how it is translated into real estate value—“the sustainability dividend”, is neither well known nor well accepted. Beyond the public relations “greenwash”, is the actual application of environmental design, science and solutions to enrich and sustain real estate development and create tomorrow’s communities. There remains an urgent need to more accurately define what constitutes sustainable development in the real estate sense of the term and to create a set of financial indicators which can be used to measure and monitor the quantum of the projects’ and portfolio’s real “sustainability dividend”.

Environmental Resources Management (ERM) is one of the world’s leading providers of environmental consulting services, employing over 3,000 professionals in 135 offices in 41 countries. We deliver innovative solutions for leading business and government clients, assisting them in managing their environmental and related risks. For more than 30 years, ERM has established a reputation as one of the world’s leading providers of environmental management and technical consulting services.

Geoffrey John Booth is Senior Fellow, Sustainable Development at the global environmental firm, ERM. He is an experienced urban planner, real estate developer and investor, expert witness, government and private sector manager, analyst, author, and speaker. In a 30 year career that began in his native Australia and extended to Asia and the Americas, he has earned the respect of clients by reducing their problems and opportunities to their essence and then outlining and effecting action that increase their power and profitability. His favorite quote is, “You only get so many breathes in this life so you shouldn’t waste one of them”.

Mr. McKibben has over 25 years experience in successful environmental business management. As leader of ERM’s southeast business operations, possesses strong leadership and team building experience. Expertise includes: property development, dealing with environmentally impaired properties and portfolios, remediation, investigation, and corrective action planning with a strong knowledge of regulations and standards at the state and Federal levels. Mr. McKibben is active in the Atlanta community serving the Metro Atlanta Chamber of Commerce’s Board of Advisors, Global Development, and Environmental and Sustainability committees.





## DOE's Commercial Building Energy Alliances – Moving Toward Zero Energy Buildings

### United States Department of Energy - Building Technologies program

**Terry Logee**

*Technology Development Manager*

The goal of DOE's Commercial Buildings Program is to achieve the development of net-zero energy commercial buildings (NZEBs) in the United States by 2025. DOE's Commercial Buildings Program includes research, development, and demonstration of high-performance and green building technologies. The Commercial Building Energy Alliances (CBEAs), along with National Accounts, will be the vehicles for evaluating, testing, and ultimately implementing advanced technologies throughout the nation.

The Department of Energy's overarching mission is to advance the national, economic, and energy security of the United States; to promote scientific and technological innovation in support of that mission; and to ensure the environmental cleanup of the national nuclear weapons complex. The Department's strategic goals to achieve the mission are designed to deliver results along five strategic themes:

- Energy Security: Promoting America's energy security through reliable, clean, and affordable energy
- Nuclear Security: Ensuring America's nuclear security
- Scientific Discovery and Innovation: Strengthening U.S. scientific discovery, economic competitiveness, and improving quality of life through innovations in science and technology
- Environmental Responsibility: Protecting the environment by providing a responsible resolution to the environmental legacy of nuclear weapons production
- Management Excellence: Enabling the mission through sound management

Terry Logee is a Technology Development Manager for the Building Technologies program at the U.S. Department of Energy. He is part of the team that manages the Commercial Building Integration Project in the Building Technologies Program at DOE. Terry has primary responsibility for day to day operations, Energy Smart Hospital's National Accounts and for indoor air quality research. Terry has over 25 years of experience in residential and commercial building energy conservation.



# Case Study

## Applied Sustainability-Case Studies in Organic Workspace Design

### Haworth Inc.

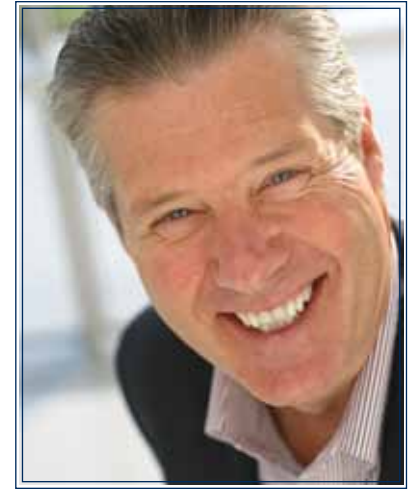
#### Steven G. Schwartz

*Director, Strategic Marketing*

This presentation provides a meaningful benchmarking opportunity by reviewing how Haworth Inc. has adopted sustainability as a corporate imperative and then analyzes the application of their sustainability program with two projects: new construction (300,000 sq ft) and tenant renovation (31,000 sq ft). This session deals with the impacts of sustainability on human, organizational, facility and business performance.

Haworth, Inc. is a global leader in the design and manufacture of office furniture and organic workspaces, including raised access floors, moveable walls, systems furniture, seating, storage and wood case goods. Haworth is headquartered in Holland, Michigan, and serves markets in more than 120 countries through a global network of 600 dealers. [www.haworth.com](http://www.haworth.com) & [www.organicworkspaces.com](http://www.organicworkspaces.com)

Steve Schwartz has worked in the construction and interiors industry for nearly three decades. He is the author of industry white papers on marketing and construction and has been a speaker to associations such as IFMA, BOMA, ASIS, NYIGF, AIA and FSDNY. He has served on advisory boards of the NYC Building Department and committees of the American Hotel and Lodging Association.



**HAWORTH®**





## A Case study of a utility reduction program in JDSU's energy intensive Santa Rosa manufacturing site

### JDSU

**Robert L. Ule**

*Global Energy Manager*

Member of IFMA

Member of CFM

Member of DACC

DACC representative on the PG&E Cost Allocation Model Group

Four approaches with practical examples will be covered; behavior change, equipment efficiency, energy procurement, and rebate programs. By integrating these four approaches utility costs were reduced by 13.5%.

JDSU (NASDAQ: JDSU) (TSX: JDU) enables broadband and optical innovation in the communications, commercial and consumer markets. JDSU is a leading provider of communications test and measurement solutions and optical products for telecommunications service providers, cable operators, and network equipment manufacturers. JDSU is a leading provider of innovative optical solutions for medical/environmental instrumentation, semiconductor processing, display, brand authentication, aerospace and defense, and decorative applications. More information is available at <http://www.jdsu.com/>.

Robert Ule is the Global Energy Manager for JDSU. He is a program manager with 30 years of facility and equipment experience in heavy industries such as vacuum metallurgy and shipyards. Degrees include a Mechanical Engineering Degree from the Naval Postgraduate School and a BS in Engineering from Harvey Mudd.



## The Navy and Renewable Energy

### Office of the Secretary of the Navy

**Howard E. Snow III**

*Deputy Assistant Secretary of the Navy (Installations and Facilities)*

This presentation will introduce the listener to the Navy's comprehensive renewable energy program and offer doorways of opportunities for public/private partnerships.

In his current position, Mr. Snow is responsible for oversight of Military Construction, Renewable Energy, Utility Privatization, Base Realignment And Closure (BRAC) execution and disposal, as well as Family and Bachelor Housing for the Navy and the Marine Corps. Mr. Snow is a retired Marine Corps officer with more than 30 years of military, business and Federal Government experience. Mr. Snow has also served as Military Legislative Assistance to Congressman Jim Saxton (NJ) where he oversaw all veteran and military issues. In the recent past he has created federal business expansion opportunities for small businesses. Mr. Snow is a retired Marine Officer who is currently enrolled in PhD program.



# Lower Energy Bills Are Just Some of the Benefits of Demand Response

- ▲ North America Power Partners will pay up to 15% of your total electric costs for your usage reductions and unused capacity.\*
- ▲ As a new source of Clean Energy you can capture the environmental credits of replacing Standby Generators providing "Spinning Reserves".
- ▲ View your energy usage data in real time via our FLEXLOAD™ System.
- ▲ Lower demand charges on your utility bill.

\*FOR QUALIFIED FLEXLOAD™ USERS

## Energy Services

- ▲ Full Service Demand Response Provider
- ▲ Design and Implement a Corporate Energy Conservation Strategy
- ▲ Forecast Energy Usage and Energy Market Prices

## Qualifications

- ▲ Registered Member:
  - PJM ISO
  - NY ISO
  - ISO-NEW ENGLAND
  - CAL ISO
  - MIDWEST ISO



**North America  
Power Partners LLC**  
THE ENERGY DEMAND RESPONSE RESOURCE

307 Fellowship Rd. Ste 116 • Mt. Laurel, NJ 08054  
856.439.0800 • fax 856.439.0801  
[www.northamericapowerpartners.com](http://www.northamericapowerpartners.com)

# Featured Presentation

... Continued from Left Page

## **NO BETTER TIME THAN THIS: Initiating Demand Response as a Clean Energy Resource**

### **North America Power Partners**

**Laurie Wiegand-Jackson**

*President*

Laurie Wiegand-Jackson, President, North America Power Partners will discuss demand response programs and a comprehensive energy conservation strategy that will lower energy costs and offer environmental benefits to your company.

Based in Mt. Laurel, N.J., North American Power Partners (NAPP) is a privately held company that manages demand response resources in the wholesale electric markets. Since its founding in 2006, NAPP has developed a growing customer base of flexible energy users that reduce their use of electricity with the power grid is in jeopardy or when prices are high. NAPP is expanding in existing and new markets, including New England, New York, Mid-Atlantic regions, the Midwest and California. Contact NAPP at 856-439-0800, or visit their website at [www.northamericapowerpartners.com](http://www.northamericapowerpartners.com).

Laurie Wiegand-Jackson is a successful entrepreneur and businesswoman with more than 20 years of experience in the energy industry. She is the President and founding member of Utility Advantage, LLC, an independent consulting and energy services company, as well as the President of North America Power Partners LLC, a leading provider of innovative demand response services to commercial and industrial clients for participation in the ISO demand response programs of the Northeast and Mid-Atlantic regions (PJM ISO, NY ISO, ISO-NE) and California.





# Lead Partner

[ Sustainable Development, Green Retrofit and Construction Summit: October 29 – 31, 2008, Hyatt Regency, Baltimore ]



## PURECHOICE



SAVING ENERGY IS EASIER THAN YOU THINK



### BUILDING PERFORMANCE SOFTWARE

PureChoice® is a leader in the collection and reporting of indoor environmental information, delivering powerful management tools for building stakeholders worldwide. Our PureTrac® line of **building performance software** and value-added services provide measurable reductions in energy consumption and comfortable productive indoor environments.

- immediate conservation opportunity for all existing buildings
- energy conservation without traditional capital expenditure
- improved indoor environments and employee productivity

Learn more at [www.purechoice.com](http://www.purechoice.com)

Phone: 800.845.5544  
E-mail: [info@purechoice.com](mailto:info@purechoice.com)



# Featured Presentation

... Continued from Left Page

## **“Building Performance Software” Realize Energy Savings Now**

**PureChoice, Inc.**

**Kevin Kuhne**

*Chief Operating Officer*

Building Performance Software – a useful tool in identifying energy conservation opportunities. This approach is in stark contrast to traditional energy conservation efforts that have focused primarily on capital improvement projects.

Founded in 1992, PureChoice has been a leader in the collection and reporting of indoor environmental information and delivering powerful management tools for building stakeholders worldwide. By leveraging data from the building’s occupied space, PureChoice offers value-added software and services that provide measurable reductions in energy consumption while providing comfortable productive indoor environments.

Mr. Kuhne joined PureChoice, Inc. in February 2004 and currently serves as Chief Operating Officer. He has over 15 years of diverse experience in sales and general management. Previously, Mr. Kuhne served as Vice President and General Manager of Central Minnesota for PriCellular Corp. Prior to that, he was the Regional Sales Manager for McCaw Communications in Minneapolis, Minnesota.



**PURECHOICE**

# Featured Presentation

[ Sustainable Development, Green Retrofit and Construction Summit: October 29 – 31, 2008, Hyatt Regency, Baltimore ]



## The Single Most Important Platform for a Long Term Sustainability Plan - and the Cost of Not Doing It Right the First Time

**Richards-Zeta Building Intelligence, Inc.**

**Edmund B. Richards**

*President and CEO*

Today Green Teams, Sustainability Directors and Facility Managers are under pressure to put strategies in place to drive down energy costs and improve efficiency. But, without the right foundation, improvements may hit a wall. Learn why foundation technology which connects all your facility systems and equipment to an IP network can be the single most important element to a long-term sustainability plan. Find out how industry leaders like Google were able to reach an additional 10% energy reduction – savings realized over and above a mature efficiency program. Learn how Walgreens gained instant value and reached a 42% reduction in 103 degree weather – after creating a networked facility dashboard. For those companies who are making progress now without a fully connected facility, understand the pitfalls and limitations you may face in the future.



Richards-Zeta is a global leader in Intelligent Building Systems (IBS) for Green and Sustainable Buildings. Richards-Zeta's IBS helps organizations seamlessly integrate their physical equipment layer and bring their systems into an IT network. Richards-Zeta's IBS enables businesses to reach critical energy and facility data and manage their green building programs on an ongoing basis. With an IBS in place, companies are able to reduce waste, improve efficiency and better manage their facilities.

Edmund B. Richards is the President/CEO and founder of Richards-Zeta Building Intelligence, Inc. (RZ) located in Santa Barbara, California. Mr. Richards is a Mechanical/Environmental Engineer with a special educational emphasis on the indoor environment including, HVAC, IAQ and Building Automation Systems. For over 25 years, Mr. Richards has been a leader in the engineering and construction market with a special focus on the Intelligent Buildings segment over the last 8 years. RZ is a manufacturer of IP centric building integration controls, including a hardware and software solution known as the Mediator™. The Mediator™ provides an integration framework, known as the Multi-Protocol Exchange (MPX™), which allows for the convergence of multiple disparate building systems onto an IP network. Mr. Richards passion, energy and vision is keenly focused on bringing down the communication barriers in the Building Automation Systems Industry and allowing the industry to finally “catch up” with the much younger and advanced Information Technology (IT) industry.

## Saving Energy Using Direct Contact Waste Heat Recovery Solutions

### SOFAME Technologies Inc.

**Ahmed Hirani**

*Vice President, P. Eng.*

SOFAME's products help customers to significantly reduce greenhouse gas emissions and save energy costs by economically recovering heat from waste energy utilizing world leading patented green technology. SOFAME serves building owners, institutional, industrial and commercial markets. We custom engineer and manufacture unique, high-efficiency direct-contact heat recovery equipment and hot water heating systems. SOFAME's products extract up to 99% of heat from flue gasses depending on the application. Our technology typically yields payback between six months and three years.

SOFAME Technologies Inc. custom engineers and manufactures unique, high-efficiency direct-contact heat recovery equipment and hot water heating systems. SOFAME's products extract up to 99% of heat from flue gases depending on the application, and also from wastewater, and return the energy in the form of high temperature hot water or pre-heated make-up air.

Ahmed has over eighteen years of experience in helping commercial and industrial customers innovatively reduce their energy consumption. Before joining SOFAME he held the position of Director of Technology Solutions & Sales at Direct Energy Business Services Ltd. Prior to this, Ahmed was co-owner of BASE Controls Ltd., a leading independent Canadian building automation system and energy Management Company.



# Lead Partner

[ Sustainable Development, Green Retrofit and Construction Summit: October 29 – 31, 2008, Hyatt Regency, Baltimore ]



a world of **Solutions**<sup>™</sup>



## Sustainability Solutions

Shaw is a leader in providing sustainability services, offering innovative, effective solutions for cleaner, more reliable cost-effective energy and development. Our team of engineers, architects, planners, and professionals are committed to helping clients be good neighbors and responsible stewards while meeting business objectives.

- Program Development
- Waste Management
- Clean Energy
- Design and Development
- Climate Change/Greenhouse Gas Emissions Reduction
- Environmental Markets
- Natural Resource Management

For more information:  
Bill Abolt – 312.499.3525  
Mark Curran – 428.886.6196  
Kevin Pierce – 312.499.3540

[www.shawgrp.com](http://www.shawgrp.com)

# Case Study and Interactive Workshop

... Continued from Left Page

## Sustainability as a Tool

### Shaw Environmental and Infrastructure Inc.



This session will demonstrate the power of sustainable design to support key business goals and objectives. We will review cost-effective LEED Gold/Platinum projects for a range of clients – corporate, municipal, and non-profit.

From conducting greenhouse gas inventories to devising innovative technological solutions to complex energy issues, Shaw is a worldwide leader in environmental engineering, design and construction services to meet environmental and infrastructure needs. As the world population seeks to address the pressing issues of environmental protection and to balance business demands with environmental responsibility, Shaw offers a full suite of sustainability solutions.



## Getting the Most from your Green Building Project – Workshop

Bring your project to this session and get solid advice on how green building and integrated design can help save money, improve working environment, and other project goals.

### Bill Abolt, LEED A.P.

*Chicago District Manager, Shaw Environmental & Infrastructure  
Vice President, Shaw Sustainable Design Solutions of Illinois*

Mr. Abolt is responsible for all aspects of project management and operations oversight for Shaw's Illinois offices. He is also a member of Shaw's Sustainability National Practice and leads the Green Design and Development and Clean Energy areas of that practice. Prior to joining Shaw, he served as Environment Commissioner, Director of the Office of Budget and Management and Chief of Management, Office of the Mayor, for the City of Chicago and, before that, as Executive Director of the Solid Waste Agency of Northern Cook County. He also is an adjunct instructor in Public Policy and Administration at Northwestern University and is Chairman of the Environment Committee of the Chicagoland Chamber of Commerce



### Kevin Pierce, LEED AP, AIA

*Director of Sustainable Design*

Kevin Pierce is Midwest Director of Sustainable Design for Shaw Environmental Inc. He has 20 years experience in architecture and planning with a focus on sustainable design. A member of the USGBC, the AIA, and the APA, Kevin is regularly invited to speak at conferences on architecture and sustainability.



# Featured Presentation

[ Sustainable Development, Green Retrofit and Construction Summit: October 29 – 31, 2008, Hyatt Regency, Baltimore ]



## Green Solutions for Your Energy Needs

### HESS Corporation

#### John Sutherland

*Senior Manager, Products and Programs*

“Going Green” can benefit your business as well as the environment. Learn how as we review HESS’ Renewable Energy program, our recently launched C-Neutral program, and our Demand Response program.

HESS Corporation provides Natural Gas, Fuel Oil, Electricity, Green Energy, and Demand Response to commercial, industrial and wholesale customers in 14 states on the East Coast. With a significant presence in all commodities and a dedication to reliability and superior customer service, HESS is uniquely positioned to meet the energy requirements of its customers.



Natural Gas • Fuel Oil • Electricity

John Sutherland has over 25 years experience in the energy business. Prior to joining HESS, John served as Vice President of Sales at Keyspan Energy Services where he was responsible for the electric retail markets. At HESS John is focused on creating innovative and value-driven products for HESS’ East Coast C&I Sales team.

## Sustainability strategy; looking at initiatives in the paint industry

### Benjamin Moore & Co

#### W. Kip Cleverley

*Director of Corporate Environment, Health, Safety, Product Stewardship and Facilities*

From developing sustainable products, to implementing green building projects, this session will highlight some of the dimensions of a multi-faceted sustainability program.

Color, technology, innovation, and leadership define Benjamin Moore & Co. For more than a century, succeeding in these areas has motivated all who work here, and continues to inspire and direct our growth today. Since 1883, we've created and sold products that preserve, protect, and beautify our homes, buildings, and structures. We excel at creating a portfolio of products that our customers desire and demand.

W. Kip Cleverley, MS, CHMM was awarded a Bachelors of Science degree in Mechanical Engineering from Widener University and graduated with honors from Farleigh Dickinson University with a Master of Science in Environmental Science with a concentration in pollution studies. Kip is a master's level fellow of the Academy of Certified Hazardous Materials Managers and has been working in the environmental arena for more than eighteen years. Over those eighteen years he has been involved in industrial and chemical manufacturing and distribution. He is currently employed by Benjamin Moore Paints as the Director of Corporate Environment, Health, Safety, Product Stewardship and Facilities.

Kip is a two-time winner of the Bradley Grant award for industrial pollution prevention. He has received national performance review recognition from the EPA and Vice President Al Gore as a recipient of the Hammer award.





## Maryland's Sustainable Energy Future: Clean, Affordable and Reliable

### Maryland Energy Administration

**Michael Li**

*Chief of Staff*

The strategic goals of the Maryland Energy Administration are:

- to make the State of Maryland a leader in energy efficiency;
- to reduce energy costs for our citizens;
- to reduce greenhouse gas emissions from energy;
- to increase the use of renewable energy;
- to leverage public/private partnerships in order to improve the competitive position of Maryland industry; and
- to lower the operating expenses of State and local governments while contributing to the improvement of air and water quality in Maryland.



Mike serves as the Chief of Staff for the Maryland Energy Administration. He oversees all areas of the organization, including the development of policy and legislation, and high profile projects and initiatives.

Previous to his time at the Energy Administration Mike worked at the Governor's Office of Smart Growth on land development issues, the Maryland Department of Natural Resources on green buildings, and the U.S. Government Accountability Office on hazardous waste. Mike lives in Baltimore and has degrees from both Rutgers and Johns Hopkins Universities.

## Green Buildings Explained Through a Green Lease

### U.S. Green Building Council (USGBC)

**Stuart D. Kaplow**

*Esquire*

With more than 60 billion square feet of already constructed nonresidential building in this country, “greening” even a modest number of those 4.5 million existing commercial buildings can make a significant contribution. And given the large number of existing buildings versus new Green building being erected, it is all but certain that in the foreseeable future, leases for tenant spaces in those buildings will lead the charge for Green building.

The U.S. Green Building Council is dedicated to promoting sustainable practices for healthy places to live, work, learn and heal. It is our mission to transform the way buildings and communities are designed, built and operated, enabling an environmentally and socially responsible, healthy and prosperous environment which improves the quality of life.

Stuart D. Kaplow is the principal at the real estate boutique, Stuart D. Kaplow, P.A. in Baltimore, Maryland, where he represents business interests as a real estate attorney with an active land use and environmental law practice including focused experience in Green building and sustainable development. He has authored more than 200 articles on real estate. He serves as a board member of the Baltimore Regional Chapter of the U.S. Green Building Council.



**BALTIMORE  
REGIONAL CHAPTER**



**Sustainability Matters at GSA**  
**U.S. General Services Administration**  
**Public Buildings Service**  
**Office of Applied Science**  
**Sustainable Design Program**

**Lance Davis, AIA, LEED**  
*Architect, Sustainable Design Expert*

*Sustainability Matters* is an aid to improve current practices and to encourage continuing innovations that create and maintain sustainable work environments. Whatever the mission a Federal agency may have, this presentation provides an integrated approach through case studies and illustrations to improving buildings and workplaces while achieving legislative and executive mandates.



Lance represents GSA on the Interagency Sustainability Working Group and the U.S. Green Building Council's LEED for Existing Buildings Core Committee. He is working on GSA wide sustainable design training and the implementation of Executive Order #13423 with the guiding principles for High Performance and Sustainable Buildings. Lance's experience includes twelve years as an architect focused on integrated environmental design. Mr. Davis' more prominent architectural work includes the Korean War Veteran's Memorial, the U.S. Capitol Visitor Center, the Walter Reed Community Center in Arlington, VA which is designed for a LEED Silver rating, and the Mathew Henson Earth Conservation Corps building which boasts the first green roof on a commercial building in Washington, DC. He has a Bachelors of Architecture from Mississippi State University, is a member of the American Institute of Architects, a founding Board Member of the National Capital Region Chapter of the USGBC and he is a LEED Accredited Professional. He recently helped publish *Sustainability Matters* which provides examples of GSA's progress toward sustainability to date.



## Total Energy Management at Husky

### Husky

#### Santiago Archila

*Manager of the Factory Planning Group*

#### Sean Golzarian

*Senior Staff Engineer, Facilities*

Total Energy Management, a 9 step program developed by Husky, is a holistic approach to reduce and sustain energy consumption in manufacturing operations. It focuses on the process of managing energy as a key component of operational costs. The program, implemented at Husky's Bolton campus has provided a 30% reduction in energy consumption over the past years.

Husky Injection Molding Systems Ltd. ([www.husky.ca](http://www.husky.ca)) is a leading global supplier of injection molding equipment and services to the plastics industry. The company has more than 40 service and sales offices, supporting customers in over 100 countries. Husky's manufacturing facilities are located in Canada, the United States, Luxembourg and China.

Manager of the Factory Planning Group at Husky Injection Molding Systems, with over 15 years experience in design and improvement of injection molding manufacturing systems and facilities worldwide. Santiago is an Industrial Engineer with a Master's degree in Industrial and Operations Engineering from the University of Michigan.

Sean has over 17 years of international experience in business and manufacturing, providing turnaround solutions and developing short and long term business and manufacturing strategies to many clients around the world. He has been a guest speaker in many international seminars on "Manufacturing Efficiency Improvement and Operational Cost Reduction Techniques".

## HUSKY

*Keeping our customers in the lead*



# Panel

## Seat of Heat

ERM's Senior Fellow, Sustainable Development will both host and moderate this session with four industry and thought leaders being put on the spot to illustrate the lessons they have learned in securing the sustainability dividend. What are the strategies? What are the pitfalls? Where are the dry gullies? What is the shortest route to the promised land?



### **Geoffrey Booth (Host / Moderator)**

*Senior Fellow, Sustainable Development*

#### **Environmental Resources Management (ERM)**

Geoffrey John Booth is Senior Fellow, Sustainable Development at the global environmental firm, ERM—Environmental Resources Management. He is an experienced urban planner, real estate developer and investor, expert witness, government and private sector manager, analyst, author, and speaker. In a 30 year career that began in his native Australia and extended to Asia and the Americas, he has earned the respect of clients by reducing their problems and opportunities to their essence and then outlining and effecting action that increase their power and profitability. His favorite quote is, “You only get so many breathes in this life so you shouldn’t waste one of them”.



### **David Blaha**

*Partner and Impact Assessment Practice Leader*

#### **Environmental Resources Management (ERM)**

David Blaha has 26 years of experience in land planning, engineering and environmental assessment at both local and regional levels and as a consultant addressing growth management, comprehensive planning and resource protection. He has coordinated siting of controversial facilities such as correction facilities and landfills. Mr. Blaha has served public and private sector clients throughout the United States, Canada, Brazil, Colombia, and Iceland.



### **G. Greg Williams**

*Director, SH&E Performance Assurance & Process Innovation*

#### **MeadWestvaco**

In its values and in its operations, MWV acts on the principle of sustainability—creating value for shareholders while fulfilling environmental, social and economic responsibilities. MWV manages all of its forestlands in accordance with internationally recognized forest certification standards, and has been selected for the Dow Jones Sustainability Indexes for a fifth consecutive year.

In his current role at MWV Greg leads the Performance Assurance and Process Innovation team in MWV's Global Policy & Strategy SH&E organization. His areas of oversight include Emerging Issues (GHG and Carbon footprint); SH&E Auditing, Learning & Development and Business Systems; Occupational Health; and overall development of SH&E Policy & Strategy.



**Katie Kirkpatrick**

*Vice President, Environmental Policy*

**Metro Atlanta Chamber of Commerce**

As vice president of environmental policy, Kirkpatrick oversees the Metro Atlanta Chamber of Commerce's work on water, air and quality growth issues – playing a key role in bringing the region's environmental stakeholders together to find long-term solutions to pressing sustainability issues.

Kirkpatrick is a registered professional engineer. She is a member of numerous professional associations, including the American Society of Civil Engineers, the American Water Works Association, the Water Environment Federation, Chi Epsilon and the Georgia Association of Water Professionals.

In previous roles, Kirkpatrick served as chairman of the board of the Georgia Industry Environmental Coalition, chairman of National Chicken Council's environmental committee and as an environmental assistant for the Georgia Poultry Federation. She holds a bachelor's degree in civil engineering from Auburn University in Alabama.



**John W. Somerhalder II**

*Chairman, President and Chief Executive Officer*

**AGL Resources**

John W. Somerhalder II was named president and chief executive officer of AGL Resources (NYSE: ATG) in March 2006 and elected as chairman of company's board of directors in November 2007. AGL Resources is an Atlanta-based natural gas company serving 2.2 million customers in six states. The company also operates natural gas distribution systems, markets natural gas at wholesale and retail, and owns and operates dark fiber optic network infrastructure.

John Somerhalder serves on the board of the American Gas Association, the Gas Technology Institute, the Metro Atlanta Chamber of Commerce, and the Georgia Chamber of Commerce. He was elected Director of Quicksilver Gas Services GP LLC in July 2007. He has served as past chairman of INGAA and the INGAA Foundation.

# Panel

## Application of Sustainable Design and Construction

Panel discussion with Clayco staff actively involved in pre-construction, design, buyout and construction of LEED certified projects. The open format discussion will include explanation of company practices, reasons why clients do or do not “go green”, myths and misconceptions, lessons learned and notes from the field.

- How Does Green Building Apply to My Business?
- How can I change my company to go green?
- Test Your Carbon Footprint
- Project Examples



**Paul Todd Merrill (Chair)**

*Senior Electrical Engineer LEED AP  
Director of Sustainable Construction*

**Clayco**



**Jeff Cannedy**

*Vice President, Industrial*

**Clayco**



**Maren Engelmohr, AIA**

*Director of Interiors*

**Clayco**



**Kevin McKenna**

*Senior Vice President and Partner*

**Clayco**





*[ Sustainable Development, Green Retrofit and Construction Summit: October 29 – 31, 2008, Hyatt Regency, Baltimore ]*

Paul, with a B.S. in Electrical Engineering, specializes in green building practices. He is a registered professional engineer. Paul directs LEED AP study sessions, trains clients, subcontractors and Clayco employees.

Jeff, with a degree in Civil Engineering from University of Missouri-Rolla, has worked for Clayco since 1994 on various projects from corporate headquarters, warehouses and logistical centers to data centers.

Maren, LEED AP and licensed architect, holds a Masters of Architecture from Clemson University. Maren provides design leadership on all interiors projects to ensure high-quality solutions, from programming through construction.

Kevin, with a Construction Management degree from Clemson, is a Senior VP and Partner managing Clayco's Chicago office. His experience ranges from Urban highrise to rural industrial projects.

# Panel

## Driving business strategy with Sustainability Innovations

*Embedding sustainability thinking into an organization can drive innovation and provide competitive advantage regardless of the industry sector. However, how do corporations justify the allocation of capital and resources to investing in sustainable innovations?*

*This panel will explore how tools can be utilized to build bullet-proof business cases for innovation using quantifiable sustainability performance indicators to ensure both economic and environmental goals are met.*



**Andrew Leventhal**  
CEO  
**EcoSynergy, Inc.**



**Will Sarni**  
Founder and CEO  
**Domani**



**Parker Brugge**  
VP, Environmental Affairs and Industry Sustainability  
**Consumer Electronics Association (CEA)**



**Elizabeth Dutrow (Chair)**  
Director, Industrial Sector Partnerships  
**ENERGY STAR**



Andy is CEO and co-founder of EcoSynergy, a carbon information management software solution. Since 1986, he led business development and strategic alliances formed joint ventures and scaled international operations for leading companies such as EMC, RSA, VeriSign and Red Hat, Sana Security and Imperva.

EcoSynergy is a carbon information management (CIM) solutions company, which provides streamlined modeling, analytics and visualization software for corporate sustainability executives who need meaningful data to prioritize and measure the environmental impact of business decisions. EcoSynergy's SaaS offerings provide actionable insights at every step in the value chain, from raw materials to product design, transportation, packaging, logistics, waste, product use and disposal.

Mr. Sarni is founder and Chief Executive Officer of DOMANI with 30 years experience in providing sustainability and environmental consulting services to private and public sector enterprises. He speaks on a range of sustainability issues, authors editorial columns on sustainable business practices and a forthcoming McGraw Hill book on greening brownfields.

Parker Brugge, VP, Environmental Affairs and Industry Sustainability, is a frequent speaker on policy issues impacting the consumer electronics industry and is responsible for representing the consumer electronics industry internationally, and before federal, state and local governments on recycling, substance restrictions and energy efficiency. From 1993 to 1997, Mr. Brugge served as Counselor to the Assistant Administrator for Solid Waste and Emergency Response at the U.S. EPA.

Elizabeth Dutrow directs the U.S. Environmental Protection Agency's program with manufacturers to improve their energy efficiency through the voluntary partnership, ENERGY STAR. In 2000, she designed ENERGY STAR's current approach for engaging industries and for providing the high level attention necessary for corporate energy programs to succeed.

# Panel

## Developing a corporate wide energy strategy

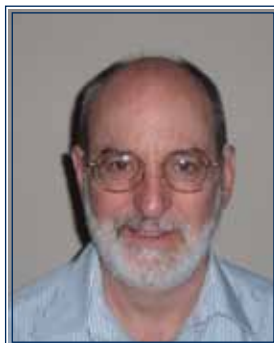
*Highlighting EnergyStar programs and initiatives, as well as the energy management strategies at Raytheon and Holcim.*



**Solomon Baumgartner**  
*General Manager, Energy & Strategies*  
**Holcim Ltd.**



**Elizabeth Dutrow**  
*Director, Industrial Sector Partnerships*  
**ENERGY STAR**



**Steve Fugarazzo (Moderator)**  
*Manager of Facilities and Engineering*  
*Leader of Enterprise Energy Team*  
**Raytheon**



In his role, Solomon Baumgartner leads the energy strategy (supply and demand) and oversees the facilitation and support of the manufacturing strategy, as well as monitors and manages results on an ongoing basis for Holcim US. With more than ten years in the cement industry, Mr. Baumgartner's experience includes a variety of engineering and management roles. Prior to this assignment, he served as Interim Plant Manager for the Dundee, MI plant, managing all aspects of a 900'000 tons cement plant producing at 59 USD/ton cash cost. Solomon grew up in Glarus, Switzerland. He holds a Bachelor of Science degree in Mechanical Engineering from the University of Applied Science in Rapperswil, Switzerland and a MBA from the University of Strathclyde Graduate Business School, Scotland.

Elizabeth Dutrow directs the U.S. Environmental Protection Agency's program with manufacturers to improve their energy efficiency through the voluntary partnership, ENERGY STAR. In 2000, she designed ENERGY STAR's current approach for engaging industries and for providing the high level attention necessary for corporate energy programs to succeed. Ms. Dutrow has been with EPA since 1984. During this time, she served as a member of the Board of Directors for the National Environmental Laboratory Accreditation Conference, a governing body established to standardize a national system for accrediting environmental laboratories in the U.S. From 1994 to 1999, Elizabeth designed industrial programs for reducing emissions of longlived greenhouse gases for semiconductor, chemical and magnesium production, and electric utilities. The agreement negotiated with the semiconductor industry has resulted in substantial reductions and avoidance of perfluorocarbon emissions from the worldwide semiconductor industry.

Steve Fugarazzo is the Director of the Raytheon Enterprise Energy Team, encompassing over 35 million square feet of facilities. Under his guidance this group has developed and implemented energy conservation measures and programs that have been widely recognized and shared. Raytheon has received the coveted Energy Star Partner of the year award for the industrial sector from the EPA three times (in 2003, 2007 and 2008) along with various awards from IFMA, AEE and other energy conservation agencies.

# Panel

## Energy Reducing Best Practices

*This panel will highlight quick and easy ways to reduce energy consumption in facilities, focusing on lighting, HVAC and building monitoring.*



**Mark Lewis**  
*President*  
**Laser Light**

**PURECHOICE**



**Kevin Kuhne**  
*Chief Operating Officer*  
**PureChoice**



**Lance Davis, AIA, LEED**  
*Architect, Sustainable Design Expert*  
**U.S. General Services Administration**  
**Public Buildings Service**  
**Office of Applied Science**  
**Sustainable Design Program**



Mark Lewis is co-founder and President of LaserWeld and LaserLight companies. Through innovation and the application of ancient business principles, this group of companies has expanded from 3600sf of rental space to own a 25 acre 200,000sf manufacturing facility in Houston Texas. Mark is a co-inventor of the LaserLight Systems.

LaserLight's innovative modular system has revolutionized industrial lighting control. This unique system will allow users to retrofit in one step to a complete wireless control and communication system. Lasers, IR, RF and the Ethernet blend seamlessly in a system that delivers amazing savings. LaserLight's facilities are located in Houston, Texas.

Mr. Kuhne is the driving force behind the PureTrac® software solution. Recognizing businesses urgent need to reduce energy consumption while meeting operational budget requirements; PureTrac® was designed to meet the needs of senior management individuals and building stakeholders. Mr. Kuhne serves as Chief Operations Officer for PureChoice.

Lance Davis is part of the Sustainable Design Program in the Office of Applied Science within GSA's Public Buildings Service (PBS) in Washington, DC. He serves as a sustainable design expert and focuses his work on gaining knowledge and educating GSA and its client agencies.

Advanced Green Technologies, Inc. . . . . 7

AGL Resources. . . . . 41

ANTARES Group Inc. . . . . 9

Benjamin Moore & Co. . . . . 35

Bradley Corporation. . . . . 51

Capstone Turbine Corporation®. . . . . 11

Clayco . . . . . 13, 42

Constellation Energy's Projects & Services Group. . . . . 16

Constellation NewEnergy Power. . . . . 15

Consumer Electronics Association (CEA) . . . . . 44

Domani . . . . . 44

EATON Corporation – Electrical Group . . . . . 19

EcoSynergy, Inc.. . . . . 44

ENERGY STAR . . . . . 44, 46

Environmental Resources Management (ERM) . . . . . 21, 40

General Services Administration (GSA) . . . . . 38, 48

Haworth Inc. . . . . 23

HESS Corporation . . . . . 34

Holcim Ltd. . . . . 46

Husky . . . . . 39

JDSU. . . . . 24

Laser Light. . . . . 48

Maryland Energy Administration . . . . . 36

MeadWestvaco . . . . . 40

Metro Atlanta Chamber of Commerce . . . . . 41

North America Power Partners . . . . . 27

Office of the Secretary of the Navy . . . . . 25

PureChoice, Inc . . . . . 29, 48

Raytheon . . . . . 46

Richards-Zeta Building Intelligence, Inc. . . . . 30

Shaw Environmental and Infrastructure Inc. . . . . 33

SOFAME Technologies Inc. . . . . 31

United States Department of Energy - Building Technologies program . . . . . 22

U.S. General Services Administration (GSA). . . . . 38, 48

U.S. Green Building Council (USGBC) . . . . . 37

William J. Clinton Foundation, Clinton Climate Initiative (CCI) . . . . . 17

WindCurrent. . . . . 51



## Bradley Corporation

Quality, durability, and innovation best describe Bradley Corp. From the classic washfountain to the unique light-powered ndite™ handwashing system, to washroom accessories, lockers and partitions, Bradley has been the leader in commercial washroom innovation.



## WindCurrent

WindCurrent helps large organizations meet the LEED Green Power specification, with their Renewable Energy Certificates (RECs). WindCurrent can combine their RECs with on-site renewable generation, to also provide a hedge against rising power prices. Since 2002, the company has served some of America's largest buyers of Green Power.



Upcoming FMA Summits for 2009

## **PROGRESSIVE ENERGY AND ENVIRONMENT SUMMIT**

APRIL 20 - 22, 2009,  
WESTIN PEACHTREE PLAZA,  
ATLANTA, GEORGIA

---

## **SUSTAINABLE DEVELOPMENT, GREEN RETROFIT & CONSTRUCTION SUMMIT**

OCTOBER 2009,  
WASHINGTON DC



DROP BY THE FMA TABLE TO RECEIVE THE E-BROCHURE

## Green Data Centers: Bridging the Gap between Data Center Facilities and IT

### Richards-Zeta Building Intelligence, Inc.

**Edmund B. Richards**

*President and CEO*

Data Centers are mission-critical facilities within most large organizations and contribute to rising energy costs. Richards-Zeta will present a case study on the value of integrating facility equipment into an organization's IT network. Learn how NetApp, the world's leader in storage and data management solutions, transformed their Data Centers by integrating the facility equipment into their IT network. NetApp's enterprise-wide system enables participation in their Utility's Demand Response program and provided an immediate return-on-investment. With Richards-Zeta Mediator solution, NetApp's solution ties seamlessly to NetApp's Cisco-powered IP network.

Richards-Zeta is a global leader in Intelligent Building Systems (IBS) for Green and Sustainable Buildings. Richards-Zeta's IBS helps organizations seamlessly integrate their physical equipment layer and bring their systems into an IT network. Richards-Zeta's IBS enables businesses to reach critical energy and facility data and manage their green building programs on an ongoing basis. With an IBS in place, companies are able to reduce waste, improve efficiency and better manage their facilities.

Richards-Zeta is a Cisco certified Gold Partner and strategic partner with Cisco's Connect Real Estate Group (CCRE). Richards-Zeta's Mediator platform links multiple building systems onto a Cisco IP network. Cisco Connect Real Estate (CCRE) utilizes the power of the Internet to bring huge financial and operational advantages to key stakeholders in the construction, property services and real estate industries. CCRE is the embodiment of the IP revolution. It harnesses the power of Internet Protocol (IP) to turn traditional building construction and management paradigms on their heads. In so doing CCRE will bring huge financial and operational advantages to the construction, facility and real estate operations.

